

SPECIFICATION

Alltainer 20ft HC expandable



Technical description:

Structure:

The base of the construction is a certified 20ft High Cube container.
The base of the construction is a brand new/ 1 time shipping container with CSC plate.
After modification, an independent authorized inspection company recertify for seaworthiness and the object still comply to CSC safety.

Measures:

Dimensions of 20ft HC container:

Outside: 20' x 8' x 9,5' (6058 mm x 2438 mm x 2896 mm)

Inside: 19,4' x 7,7' x 8,9' (5898 mm x 2287 mm x 2698 mm)

Floor area: 148,54 sq.ft (13,8 m²)

Volume: 1321 ft³ (37,4 m³)

Weight: approx. 8135 lbs (3690 kg)

Dimensions of expansion part:

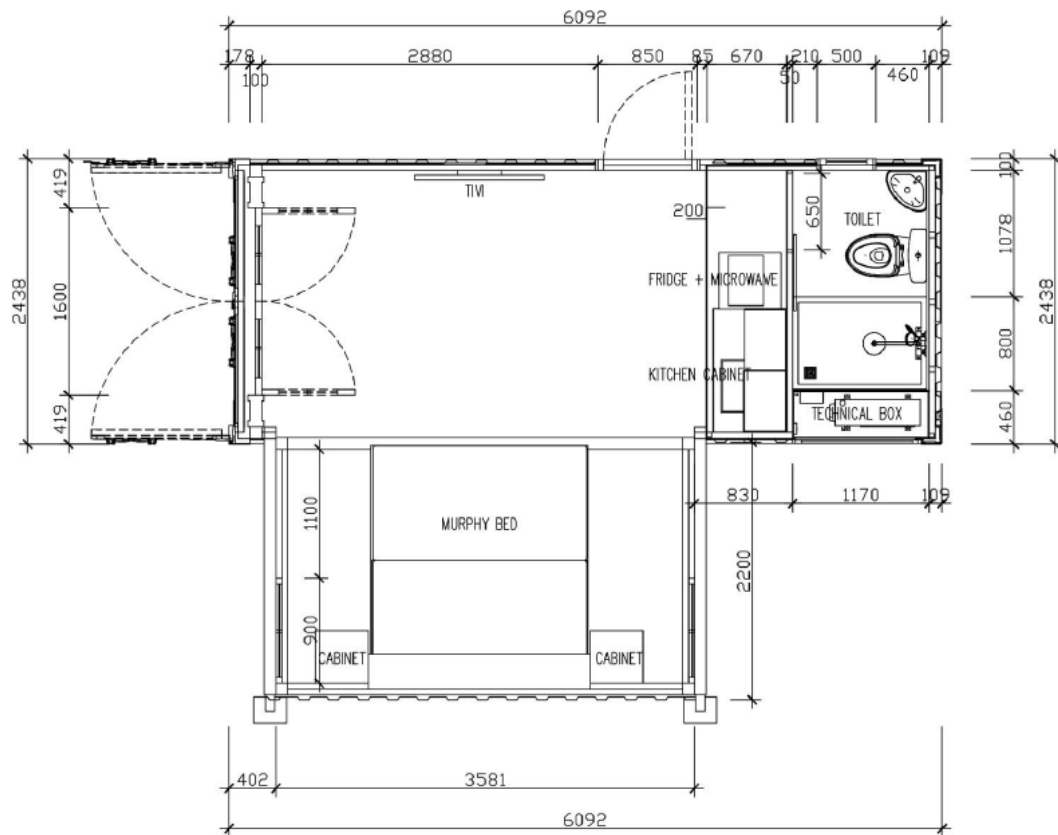
Outside: 3300 x 2200 x (2550 ~ 2450)

Inside: 3210 x 2050 x (2350 ~2250)

Floor area: 3,210 x 2040 = 6,550 m²

Volume: 15 CBM

Weight: 1,000 Kgs



LAYOUT PLAN

The material is corrugated steel.

Cut outs:

For AC unit and access to water tank and septic tank, Window in Toilet
Door opening, Glass doors, Extension cut out on side.

Extension structure:

Metal frame, Metal sheet covering on sides, Reuse of container wall as outer side of extension.

Container recertified for seaworthy transport (accepted by shipping line)

Paint:

Primer used on all exterior surfaces, Primer/Rust protection: Ezko Epoxy coating

Clients choice of RAL colour to exterior surface with 2 components paint (Jotun Brand).

Insulation:

100 mm PIR (POLY ISOCYANURATE) panels with 0,6 mm corrugated iron on both sides.

Electrostatic coating on surfaces give features like antibacterial, anti-dust.

Foam filling 99 % with a density of 46 kg/m³.

Fireproof: B2 classification according to DIN4102.

Heat resistance: -50 to 300 Celsius.

Thermal conductivity: 0,018 W/m.k

All walls & ceiling are insulated with these panels.

Interior:

10 mm thick cemboard over container's original bamboo floor.

10 mm thick vinyl/composite plate for floor finish with many pattern choices.

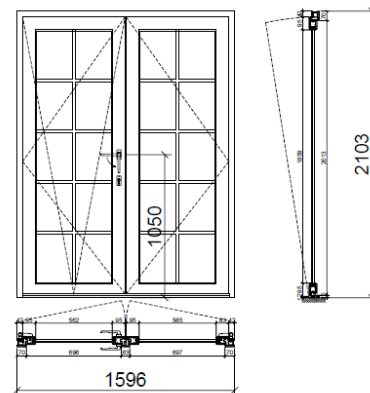
All glass on doors and windows are double glass 24mm: 6mm LowE-12 argon space-6mm LowE temper. Made in Germany.

Main door: insulated steel door, 5 cm thick with 1,2 mm steel plates on both side and EPS foam between.

Double French doors:

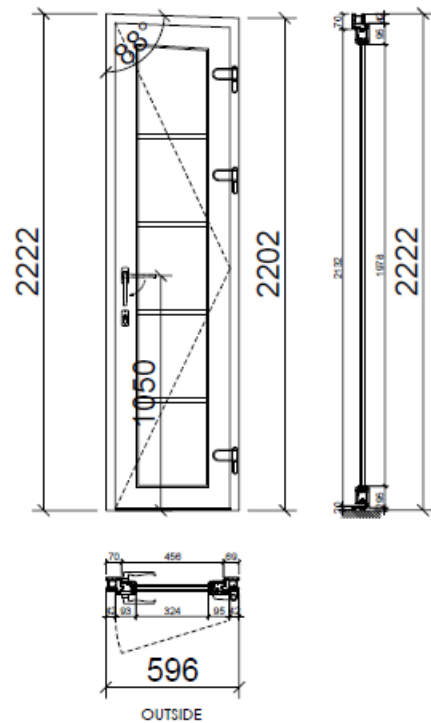
2 Sashes tilt & turn opening door, aluplast uPVC profile, imported from Germany, white color, ideal 2000.

Hardware Roto: (with cylinder) tilt & turn hinges, stay bearing, arm bearing, corner drive, center lock, stay guide, lifting and mis-handling, door gear, double handle, cylinder, strikers.

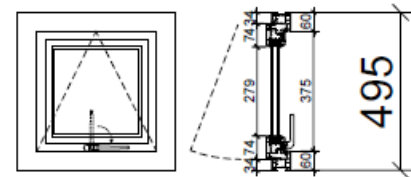


Exit door:

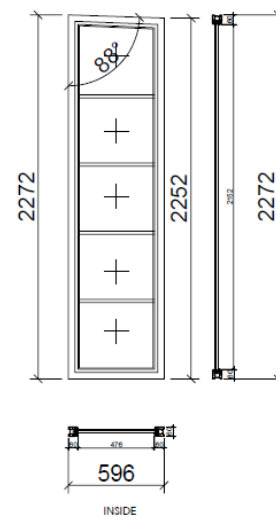
1 sash outward opening door, aluplast uPVC profile, imported from Germany, white color, ideal 2000.
 Hardware Roto: 3D hinges Dr. Hahn 120kg, main entrance door gear lock, cylinder, double handle, strikers.


Tilt & Turn toilet windows:

1 sash awning window, aluplast uPVC profile, imported from Germany, white color, ideal 2000.
 Hardware Roto: Friction hinges, window gear, handle, strikers.


Glass Windows:

Fixed window, aluplast uPVC profile, imported from Germany, white color, ideal 2000.





Interior components:

Kitchenette with stainless steel sink and 1 small cabinet.

Toilet sliding door: Wooden composite with phenolic resin water shield

American toilet chair with soft close lock.

Sink: Rosan inox 304

Stainless steel shower kit (Made in Vietnam)

Septic tank size 700 liter

Grey water tank : 400 liter

Integrated water tank size 300 liter

Septic outlet: 4 inches vacuum connector.

Kitchen Sink height 800 mm from floor

Electrical components:

Furrion 50 Amp 125/250 Volt Shore Power Inlet with Marine Grade quality.

Breaker box: Four fuses:

30A for main power connector

20 A for Water boiler

20 A for Air condition

10 A for all wall plugs and lights

Rockstone Power 3000 Watt Voltage Converter Transformer

LED lights: 5 x 7W and 1x 16W tube 1.2m

3 wall switches for lights

5 x wall plugs with integrated 2 x USB A (3,1A chargers) per plug

Bosch Electric Mini-Tank Water Heater Tronic 3000 T 7-Gallon (ES8)

SEAFLO 33-Series Industrial Water Pressure Pump.

DAIKIN Air Conditioner 12000 TBU, heat & cold.



Water system:

Piping: $\frac{3}{4}$ inch CPVC US standard

Piping in water tank: $\frac{3}{4}$ inch stainless steel

Faucets: Stainless steel

Plumbing: Standard 1-1/4 inch CPVC for water drainage