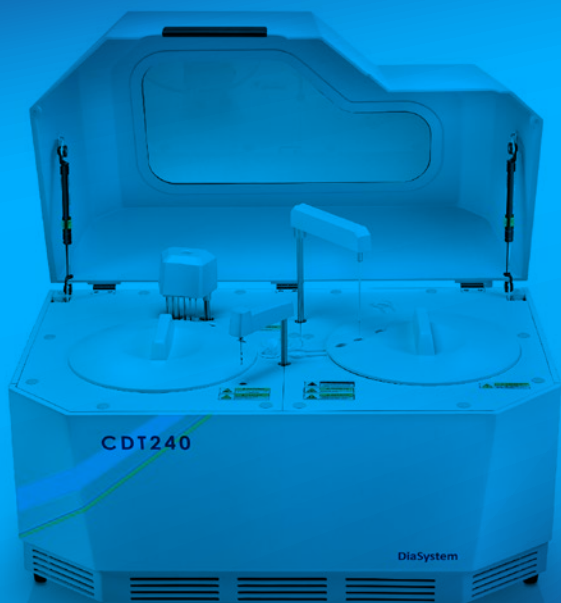




# DiaSystem

Clinical Chemistry – our passion



AUTO CHEMISTRY ANALYZER

## CDT240

HEMATOLOGY ANALYZER

## DSH 370

AUTO SPECIFIC PROTEIN ANALYZER

## DIA-PRO

Product Catalogue

---

**Clinical Chemistry, Routine Chemistry, Protein Chemistry,  
Immunoturbidimetry, Drugs of Abuse, Therapeutic Drug Monitoring,  
Hematology, Hematology Reagents, Adulteration, Reagents, Calibrators, Controls**

# DIASYSTEM SCANDINAVIA

This Product Catalogue from Diasystem Scandinavia provides you an overview of all Reagents in dedicated and barcoded bottles for Clinical Chemistry, Immunoturbidimetry, TDM:s and Drugs of Abuse beside there specific Calibrators and Controls.

Please contact us for Applications, Package Inserts and MSDS.

# INDEX

<b>CDT240</b> .....	4 – 5
Auto Chemistry Analyzer	
<b>DSH 370</b> .....	6 – 7
Hematology Analyzer	
<b>DIA-PRO</b> .....	8 – 9
Auto Specific Protein Analyzer	
<b>CLINICAL CHEMISTRY REAGENTS</b> .....	10 – 12
<b>STANDARDS</b> .....	13
<b>CALIBRATORS</b> .....	14 – 15
<b>CONTROLS</b> .....	16 – 17
<b>MULTI PURPOSE KITS</b> .....	19
Clinical Chemistry, Immunoturbidimetry,	
<b>THERAPEUTIC DRUG MONITORING</b> .....	19
<b>DRUGS OF ABUSE</b> .....	20 – 27
<b>ADULTERATION KITS</b> .....	29 – 31



### GENERAL FEATURES

- 22 parameters with P-LCC, P-LCR and RBC, WBC, PLT histograms
- Effective double chamber design
- Throughput; more than 70 samples per hour
- Impedance method for WBC, RBC and PLT
- Advanced floating discriminator for correct WBC separation
- Photoelectric colorimetry method for HGB with cyanide free reagent
- Micro sample volume at 13µL for whole blood mode and 20µL for pre-dilute mode
- On board storage capacity of 1,000,000 samples results
- Support USB data backup & system upgrade
- Built-in thermal printer
- LIS and HIS available with HL7 protocol
- Advanced QC



### ENABLING PRECISION MEDICINE

Accurate, precise, and reproducible results. Every sample, every time. Proven impedance measurement technology. Auto internal & external cleaning for aspiration probe. High precision syringes. Internal preheating for diluent for every test.



### EASY TO USE

Large color LCD with high resolution. Working status indicator light. Mouse and keyboard connection by USB. Internal storage of lyse. Ergonomic, user-friendly operations with single aspiration system for all samples. Large touch-screen with intuitive menus.



### CLINICALLY RELEVANT RESULTS

High quality results, enabling detection as well as companion diagnostics for monitoring of therapeutic effectiveness.



### SUPPORT & MAINTENANCE

Self-checking function during initialization. Auto clog removing by aperture cauterizing and flushing. Exceptionally low maintenance. World-Wide network of experts for service, validation and certification.



### REAGENTS

Sweden made, low-noise reagent-system for best accuracy.



### QUALITY

Built in Sweden. Based on more than 50 years of experience in diagnostics.



### COMPLIANT

with international regulatory requirements for analysis of human blood.



### INTERNATIONAL CERTIFICATE AND DOCUMENTS

ISO 9001-13845 Certified. CE-marking.



### GENERAL FEATURES

- Classical Immunoassay Technology: Nephelometry
- All-in-one cartridge for single test
- Auto ID of assay QR code on reagent cartridge
- Small sample volume and wide test menu
- Quantitative measurement and maintenance free
- Independent calibration



All in one Cartridge



One Step

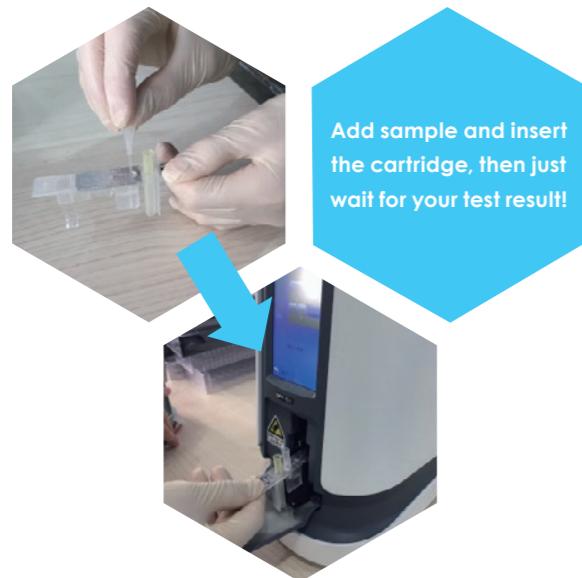


Reliable Result

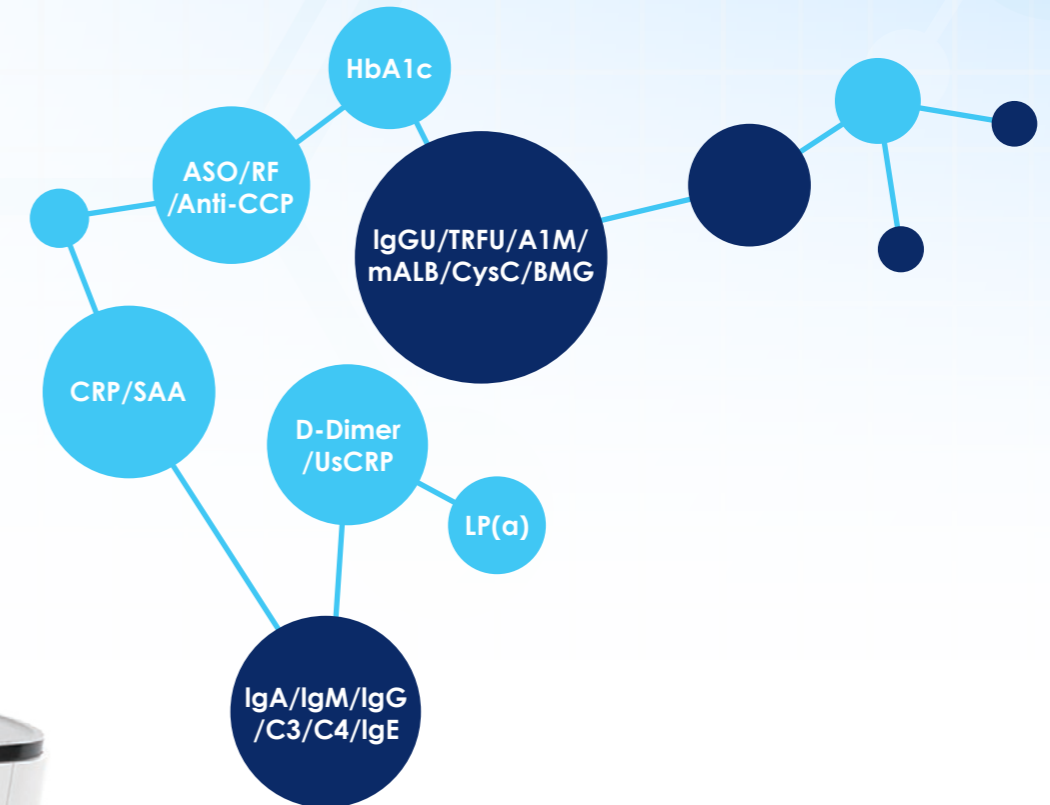


Compact

### ONE STEP ONLY!



Add sample and insert the cartridge, then just wait for your test result!



## CLINICAL CHEMISTRY REAGENTS

ITEM	METHOD	MULTIPURPOSE PACKAGES		CALIBRATOR	CONTROLS	PRODUCT CODE
		R1	R2			
<b>ALBUMIN</b>	BCG	5 x 25 mL		UniCal CC	UniLab N	01 00002 70 04 0125
		10 x 60 mL			UniLab P	01 00002 70 04 0600
<b>ALBUMIN IN URIN/CSF</b>	MICROALBUMIN	2 x 20 mL	1 x 8 mL	UniCal Albumin U/CSF	UniLab Albumin U/CSF	02 00069 70 04 0048
		5 x 25 mL	1 x 25 mL			02 00069 70 04 0150
<b>ALKALINE PHOSPHATASE</b>	DGKC	5 x 20 mL	1 x 25 mL	UniCal CC	UniLab N	01 00093 70 04 0125
		5 x 80 mL	1 x 100 mL		UniLab P	01 00093 70 04 0500
<b>ALKALINE PHOSPHATASE</b>	IFCC	5 x 20 mL	1 x 25 mL	UniCal CC	UniLab N	01 00003 70 04 0125
		5 x 80 mL	1 x 100 mL		UniLab P	01 00003 70 04 0125
<b>ALPHA HBDH</b>	DGKC	5 x 20 mL	1 x 25 mL	UniCal CC	UniLab N	01 00005 70 04 0125
<b>ALAT (GPT)</b>	IFCC	5 x 20 mL	1 x 25 mL	UniCal CC	UniLab N	01 00001 70 04 0125
		5 x 80 mL	1 x 100 mL		UniLab P	01 00001 70 04 0500
<b>ANTISTREPTOLYSIN O</b>	Turbidimetric	5 x 25 mL	1 x 25 mL	UniCal ASO	UniLab ASO	02 00050 70 04 0125
<b>AMYLASE</b>	EPSP-7	5 x 20 mL	1 x 25 mL	UniCal CC	UniLab N	01 00004 70 99 0125
		5 x 80 mL	1 x 100 mL		UniLab P	01 00004 70 99 0500
<b>APOLIPOPROTEIN A1</b>	Turbidimetric	5 x 25 mL	1 x 25 mL	UniCal Apo A1/B	UniLab A1/B	02 00056 70 04 0125
<b>APOLIPOPROTEIN B</b>	Turbidimetric	5 x 25 mL	1 x 25 mL	UniCal Apo A1/B	UniLab A1/B	02 00057 70 04 0125
<b>ASAT (GOT)</b>	IFCC	5 x 20 mL	1 x 25 mL	UniCal CC	UniLab N	01 00006 70 04 0125
		5 x 80 mL	1 x 100 mL		UniLab P	01 00006 70 04 0500
<b>BETA-HYDROXYBUTYRATE</b>	Enzymatic	4 x 20 mL	2x10 mL	Standard 3 x 3 ml	UniLab N UniLab P	01 00325 70 04 0031
<b>BICARBONAT</b>	NADH	5 x 25 mL		UniCal Bicarbonate	UniLab Bicarbonate	01 00007 70 04 0125
		6 x 100 mL				01 00007 70 04 0600
<b>BILIRUBIN (DIRECT)</b>	DCA	5 x 20 mL	1 x 25 mL	UniCal CC	UniLab N	01 00008 70 04 0125
		5 x 80 mL	1 x 100 mL		UniLab P	01 00008 70 04 0500
<b>BILIRUBIN (TOTAL)</b>	DCA	5 x 20 mL	1 x 25 mL	UniCal CC	UniLab N	01 00009 70 04 0125
		5 x 80 mL	1 x 100 mL		UniLab P	01 00009 70 04 0500
<b>CALCIUM</b>	Arsenazo	5 x 25 mL		UniCal CC	UniLab N	01 00010 70 04 0125
		6 x 100 mL			UniLab P	01 00010 70 04 0600
<b>CALCIUM</b>	Phosphonazo III	4 x 20 mL	1 x 20 mL	UniCal CC	UniLab N	01 00012 70 04 0100
		5 x 80 mL	1 x 100 mL		UniLab P	01 00012 70 04 0500
<b>CHLORIDE</b>	Colorimetric	5 x 20 mL	1 x 25 mL	UniCal E	UniLab N	01 00013 70 04 0125
<b>CHOLESTEROL (TOTAL)</b>	CHOD-PAP	5 x 25 mL		UniCal CC	UniLab N	01 00094 70 04 0125
		6 x 100 mL			UniLab P	01 00094 70 04 0600
<b>CHOLESTEROL (HDL)</b>	Immunoinhibition	5 x 20 mL	1 x 25 mL	UniCal CC	UniLab N	01 00026 70 04 0125
		5 x 80 mL	1 x 100 mL		UniLab P	01 00026 70 04 0500
<b>CHOLESTEROL (LDL)</b>	Direct	5 x 20 mL	1 x 25 mL	UniCal Lipid	UniLab N	01 00031 70 04 0125
		5 x 80 mL	1 x 100 mL		UniLab P	01 00031 70 04 0500
<b>CHOLINESTERASE</b>	Butyrylthiocoline	5 x 20 mL	1 x 25 mL	UniCal CC	UniLab N	01 00015 70 04 0125
<b>CK-MB</b>	DGKC/IFCC	5 x 20 mL	1 x 25 mL	UniCal CK-MB	UniLab N	01 00016 70 04 0125
		5 x 80 mL	1 x 100 mL		UniLab P	01 00016 70 04 0500

## CLINICAL CHEMISTRY REAGENTS

ITEM	METHOD	MULTIPURPOSE PACKAGES		CALIBRATOR	CONTROLS	PRODUCT CODE
		R1	R2			
<b>CREATININE</b>	Jaffe	4 x 20 mL	1 x 20 mL	UniCal CC	UniLab N	01 00019 70 04 0100
		5 x 80 mL	1 x 100 mL		UniLab P	01 00019 70 04 0500
<b>CREATININE</b>	PAP	3 x 20 mL	2 x 15 mL	UniCal CC	UniLab N	01 00400 70 04 0090
		4 x 100 mL	2 x 100 mL		UniLab P	01 00400 70 04 0600
<b>CREATINE KINASE</b>	DGKC/IFCC	5 x 20 mL	1 x 25 mL	UniCal CC	UniLab N	01 00017 70 04 0125
		5 x 80 mL	1 x 100 mL		UniLab P	01 00017 70 04 0500
<b>COMPLEMENT C3C</b>	Turbidimetric	2 x 20 mL	1 x 8 mL	UniCal Protein	UniLab Protein	02 00058 70 04 0048
		4 x 20 mL	2 x 8 mL			02 00058 70 04 0096
<b>COMPLEMENT C4</b>	Turbidimetric	2 x 20 mL	1 x 8 mL	UniCal Protein	UniLab Protein	02 00059 70 04 0048
		4 x 20 mL	2 x 8 mL			02 00059 70 04 0096
<b>CRP</b>	Turbidimetric	5 x 25 mL	1 x 25 mL	UniCal CRP	UniLab CRP	02 00057 70 04 0125
<b>CRP U-HS</b>		3 x 20 mL	3 x 20 mL	UniCal hs CRP	UniLab hs CRP	02 00100 70 04 0120
<b>ETHANOL</b>	Enzymatic	4 x 20 mL	2 x 10 mL	UniCal Ethanol	UniLab Ethanol	01 00021 70 04 0100
<b>FERRITIN</b>	Turbidimetric	3 x 20 mL	3 x 10 mL	UniCal Ferritin	UniLab Ferritin	02 00062 70 04 0090
<b>GAMMA-GT</b>	SZASZ/IFCC	5 x 20 mL	1 x 25 mL	UniCal CC	UniLab N	01 00022 70 04 0125
		5 x 80 mL	1 x 100 mL		UniLab P	01 00022 70 04 0500
<b>GLDH</b>	DGKC	5 x 20 mL	1 x 25 mL	UniCal CC	UniLab N	01 00023 70 04 0125
<b>GLUCOSE (10 MIN.)</b>	GOD	5 x 25 mL		UniCal CC	UniLab N	01 00095 70 04 0125
		6 x 100 mL			UniLab P	01 00095 70 04 0600
<b>GLUCOSE</b>	Hexokinase	4 x 20 mL	1 x 20 mL	UniCal CC	UniLab N	01 00025 70 04 0100
		5 x 80 mL	1 x 100 mL		UniLab P	01 00025 70 04 0500
<b>HBA1C</b>	Enzymatic	2 x 15 mL (R3: 1 x 5 mL)	1 x 10 mL	UniCal HbA1c	UniLab HbA1c	01 00035 70 04 0050
<b>HDL3</b>	Enzymatic	2 x 19.0 mL	2 x 7,4 mL	UniCal HDL3	UniLab HDL3 L1	01 00324 70 04 0057
					UniLab HDL3 L2	
<b>HOMOCYSTEIN</b>	Enzymatic	R1/R2	R3	UniCal Homocystein	UniLab Homocystein L1 UniLab Homocystein L2	01 00326 70 04 0067
<b>IMMUNOGLOBULIN A</b>	Turbidimetric	2 x 20 mL	1 x 8 mL	UniCal Protein	UniLab Protein	02 00064 70 04 0048
<b>IMMUNOGLOBULIN E</b>	Turbidimetric	2 x 20 mL	2 x 10 mL	UniCal IgE	UniLab IgE	02 00065 70 04 0050
<b>IMMUNOGLOBULIN G</b>	Turbidimetric	2 x 20 mL	1 x 8 mL	UniCal Protein	UniLab Protein	02 00066 70 04 0048
<b>IMMUNOGLOBULIN M</b>	Turbidimetric	2 x 20 mL	1 x 8 mL	UniCal Protein	UniLab Protein	02 00067 70 04 0048
<b>IRON</b>	Ferene	4 x 20 mL	1 x 20 mL	UniCal CC	UniLab N	01 00028 70 04 0100
		5 x 80 mL	1 x 100 mL		UniLab P	01 00028 70 04 0500
<b>KAPPA FREE LIGHT CHAIN</b>	Turbidimetric	1 x 22 mL	1 x 7 mL	UniCal kappa	UniLab kappa L1	02 00327 70 04 0029
					UniLab kappa L2	

## CLINICAL CHEMISTRY REAGENTS

ITEM	METHOD	MULTIPURPOSE PACKAGES		CALIBRATOR	CONTROLS	PRODUCT CODE
		R1	R2			
LACTATE	DGKC	5 x 20 mL	1 x 25 mL	UniCal CC	UniLab N	01 00029 70 04 0125
LAMBDA FREE LIGHT CHAIN	Turbidimetric	1 x 22 mL	1 x 7 mL	UniCal lambda	UniLab lambda L1 UniLab lambda L2	02 00328 70 04 0029
LDH	IFCC	5 x 20 mL	1 x 25 mL	UniCal CC	UniLab N	01 00096 70 04 0125
LIPASE	Colorimetric	5 x 20 mL	1 x 25 mL	UniCal CC	UniLab N	01 00032 70 04 0125
LP-PLA2	UV	1 x 24,75 mL 1 x 13,8 mL	0,25 mL 0,2 mL	UniCal Lipid	UniLab Lp-PLA2 L1 UniLab Lp-PLA2 L2	01 00330 70 04 0045
LP(A) 21	Enzymatic	2 x 20 mL	2 x 10 mL	UniCal Lipid	UniLab L	02 00068 70 04 0060
MAGNESIUM	Xylidyl blue	5 x 25 mL 6 x 100 mL		UniCal CC	UniLab N UniLab P	01 00034 70 04 0125 01 00034 70 04 0600
MYOGLOBIN	Turbidimetric	2 x 12 mL	1 x 8 mL	UniCal Myoglobin	UniLab Myoglobin	02 00070 70 04 0032
NEFA	Trinder	2 x 20 mL	1 x 10 mL	UniCal Lipid	UniLab L	01 00035 70 04 0050
PANCREATIC AMYLASE	EPSCG-7	5 x 20 mL	1 x 25 mL	UniCal CC	UniLab N	01 00036 70 04 0125
PHOSPHATE	Molybdate	4 x 20 mL	1 x 20 mL	UniCal CC	UniLab N	01 00037 70 04 0100
PHOSPHOLIPIDE	Enzymatic	4 x 20 mL	1 x 20 mL	UniCal Lipid	UniLab L	01 00038 70 04 0100
POTASSIUM	Colorimetric	5 x 20 mL	1 x 25 mL	UniCal CC	UniLab N	01 00039 70 04 0125
PREALBUMIN		2 x 20 mL	1 x 8 mL	UniCal Protein	UniLab Protein	02 00071 70 04 0048
PROCALCITONIN	Turbidimetric	2 x 18 mL	2 x 6 mL	UniCal PCT	UniLab PCT L1 UniLab PCT L2	01 00331 70 04 0048
RHEUMATOID FACTOR	Turbidimetric	2 x 20 mL	1 x 8 mL	UniCal RF	UniLab RF	02 00072 70 04 0048
SDLDL	Enzymatic	2 x 21,8 mL	2 x 8,4 mL	UniCal sdLDL	UniLab sdLDL L1 UniLab sdLDL L2	01 00323 70 04 0065
SERUM AMYLOID A	Turbidimetric	2 x 19 mL	2 x 7,4 mL	UniCal SAA	UniLab SAA L1 UniLab SAA L2	01 00332 70 04 0075
SODIUM	Colorimetric	5 x 15 mL	1 x 25 mL	UniCal CC	UniLab N	01 00040 70 04 0100
TOTAL PROTEIN	Biuret	4 x 20 mL 5 x 80 mL	1 x 20 mL 1 x 100 mL	UniCal CC	UniLab N UniLab P	01 00042 70 04 0100 01 00042 70 04 0500
TOTAL PROTEIN UC	Pyrogallol	5 x 25 mL 6 x 100 mL		UniCal UC	UniLab Urine	01 00043 70 04 0125 01 00043 70 04 0600
TRANSFERRIN	Turbidimetric	2 x 20 mL	1 x 8 mL	UniCal Protein	UniLab Protein	02 00073 70 04 0048
TRIGLYCERIDES (10 MIN.)	GPO-Trinder	5 x 25 mL 6 x 100 mL		UniCal CC	UniLab N UniLab P	01 00098 70 04 0125 01 00098 70 04 0600
UIBC	Ferene S	4 x 20 mL	1 x 20 mL	UniCal CC	UniLab P	01 00045 70 04 0125
UREA	Urease-GLDH	4 x 20 mL 5 x 80 mL	1 x 20 mL 1 x 100 mL	UniCal CC	UniLab N UniLab P	01 00046 70 04 0100 01 00046 70 04 0500
URIC ACID	TBHBA	4 x 20 mL 5 x 80 mL	1 x 20 mL 1 x 100 mL	UniCal CC	UniLab N UniLab P	01 00048 70 04 0100 01 00048 70 04 0500
URIC ACID	TOOS	4 x 20 mL 5 x 80 mL	1 x 20 mL 1 x 100 mL	UniCal CC	UniLab N UniLab P	01 00047 70 04 0100 01 00047 70 04 0500

## STANDARDS

ITEM	CONCENTRATION	KIT SIZE	PRODUCT CODE
ALBUMIN STANDARD	5 g/dL	6 x 3 mL	06 00102 70 04 0018
ATP STANDARD	100 µmol/dL	3 x 3 mL	06 00103 70 04 0009
BICARBONATE STANDARD	30 mmol/L	6 x 3 mL	06 00121 70 04 0018
CALCIUM STANDARD	10 mg/dL	6 x 3 mL	06 00101 70 04 0018
CHOLESTEROL STANDARD	200 mg/dL	6 x 3 mL	06 00105 70 04 0018
CREATININE STANDARD	2 mg/dL	6 x 3 mL	06 00106 70 04 0018
ETHANOL STANDARD	0.5 mg/mL 1.0 mg/mL 2.0 mg/mL 3.0 mg/mL 4.0 mg/mL	10 x 1 mL 10 x 1 mL 10 x 1 mL 10 x 1 mL 10 x 1 mL	07 00287 70 04 0010 07 00288 70 04 0010 07 00289 70 04 0010 07 00290 70 04 0010 07 00291 70 04 0010
GLUCOSE STANDARD	100 mg/dL	6 x 3 mL	06 00108 70 04 0018
B-HYDROXYBUTYRATE STANDARD	1 mmol/L	3 x 3 mL	06 00417 70 04 0009
IRON STANDARD	100 µg/dL	6 x 3 mL	06 00109 70 04 0018
MAGNESIUM STANDARD	2 mg/dL	6 x 3 mL	06 00110 70 04 0018
NEFA STANDARD	1 mmol/L	3 x 3 mL	06 00111 70 04 0018
PHOSPHATE STANDARD	5 mg/dL	6 x 3 mL	06 00112 70 04 0018
PHOSPHOLIPIDS STANDARD	4 mmol/L	3 x 1 mL	06 00113 70 04 0003
TOTAL PROTEIN STANDARD	5 g/dL 1300 mg/L	6 x 3 mL 6 x 3 mL	06 00114 70 04 0018 06 00115 70 04 0018
TRIGLYCERIDES STANDARD	200 mg/dL	6 x 3 mL	06 00116 70 04 0018
UREA STANDARD	50 mg/dL	6 x 3 mL	06 00117 70 04 0018
URIC ACID STANDARD	6 mg/dL	6 x 3 mL	06 00118 70 04 0018

## CALIBRATORS

ITEM	KIT SIZE	PRODUCT CODE
<b>UNICAL CC - LYOPHILISATED MULTI-CALIBRATOR FOR CLINICAL CHEMISTRY</b>		
Acetaminophen*, ALT, Albumin, Alkaline phosphatase, α-Amylase, AST, Bile acids*, Bilirubin Direct and Total, Calcium, Chloride, Cholesterol, Cholinesterase, CK-NAC, CK-MB, Copper*, Creatinine, Free cholesterol*, Gamma-GT, Gentamycin*, GLDH, Glucose, α-HBDH, Homocysteine*, β-Hydroxybutyrate, Iron, Lactate, LDH, Lipase, Lithium, Magnesium, Pancreatic amylase, Phosphorus, Potassium*, Salicylate*, Sodium*, Total protein, Triglycerides, UIBC, Urea, Uric acid, Zinc*		
*Unassayed		
One Level	6 x 3mL	06 00122 70 04 0018
One Level	20 x 3mL	06 00122 70 04 0060
<b>UNICAL ID STABLE LIPID CALIBRATOR</b>		
HDL, LDL, Phospholipids, NEFA, Lp-PLA2		
One Level	3 x 2mL	06 00152 70 04 70018
<b>UNICAL PROTEIN - LIQUID STABLE R</b>		
Albumin, C3c, C4, IgA, IgG, IgM, Prealbumin, Transferrin		
Five Levels	5 x 1mL	06 00141 70 04 0005
<b>UNICAL MICROALBUMIN - LIQUID STABLE</b>		
Five Levels	5 x 1mL	06 00418 70 04 0005
<b>UNICAL APO A1/B - LYOPHILISATED</b>		
One Level	3 x 2mL	06 00142 70 04 0006
<b>UNICAL ASO - LIQUID STABLE</b>		
Five Levels	5 x 1mL	06 00143 70 04 0005
<b>UNICAL CK-MB - LYOPHILISATED</b>		
One Level	6 x 1mL	06 00119 70 04 0006
<b>UNICAL CRP - LIQUID STABLE</b>		
Five Levels	5 x 2mL	06 00144 70 04 0010
<b>UNICAL CRP HIGH - LIQUID STABLE</b>		
One Level	3 x 2mL	06 00420 70 04 0006
<b>UNICAL CRP HS - LIQUID STABLE</b>		
Five Levels	5 x 1mL	06 00145 70 04 0005
<b>UNICAL CRP U - LIQUID STABLE</b>		
Five Levels	5 x 1mL	06 00146 70 04 0005

## CALIBRATORS

ITEM	KIT SIZE	PRODUCT CODE
<b>UNICAL CYSTATIN C - LIQUID STABLE</b>		
Five Levels	5 x 1mL	06 00311 70 04 0005
<b>UNICAL D-DIMER - LYOPHILISATED</b>		
One Level	1 x 1mL	06 00308 70 04 0001
<b>UNICAL ELECTROLYTES (NA, K, CL)</b>		
Four Levels	4 x 3mL	06 0044 70 04 0012
<b>UNICAL FERRITIN - LIQUID STABLE</b>		
Four Levels	4 x 1mL	06 00147 70 04 0004
<b>UNICAL HBA1C - LYOPHILISATED</b>		
One Levels	4 x 0,25mL	06 00148 70 04 0001
<b>UNICAL HOMOCYSTEINE - LIQUID STABLE</b>		
Three Levels	3 x 1mL	06 00306 70 04 0003
<b>UNICAL IGE - LIQUID STABLE</b>		
Five Levels	5 x 1mL	06 00149 70 04 0005
<b>UNICAL LP(A) 21 - LYOPHILISATEDE</b>		
Five Levels	5 x 1mL	06 00158 70 04 0005
<b>UNICAL MYOGLOBIN - LIQUID STABLE</b>		
Four Levels	4 x 1mL	06 00150 70 04 0004
<b>UNICAL RF - LIQUID STABLE</b>		
Five Levels	5 x 1mL	06 00151 70 04 0005

## CONTROLS

ITEM	KIT SIZE	PRODUCT CODE
<b>UNILAB N - LYOPHILIZED NORMAL CONTROL FOR CLINICAL CHEMISTRY</b>		
Acetaminophen <sup>1</sup> , ALAT, Albumin <sup>2</sup> , Alkaline phosphatase, α-Amylase, Apolipoprotein A1 <sup>2</sup> , Apolipoprotein B <sup>2</sup> , ASAT, Bicarbonate, Total Bile acids, Bilirubin Direct and Total, Calcium, Carbamazepine <sup>1</sup> , Chloride, Cholesterol, Cholinesterase <sup>2</sup> , CK-NAC, CK-MB, Copper, Cortisol <sup>1</sup> , Creatinine, Digoxin <sup>1</sup> , DL-Phenylalanine <sup>1</sup> , Free cholesterol <sup>1,2</sup> , Free glycerol <sup>1,2</sup> , Gamma-GT, Gentamycin <sup>1</sup> , GLDH, Glucose, α-HBDH <sup>2</sup> , HDL <sup>2</sup> , β-Hydroxybutyrate, IgA <sup>2</sup> , IgE <sup>2</sup> , IgG <sup>2</sup> , IgM <sup>2</sup> , Iron, Lactate, LDH, LDL <sup>2</sup> , Lipase, Lithium, Magnesium, Pancreatic amylase, Phenytoin <sup>1</sup> , Phospholipids <sup>2</sup> , Phosphorus, Potassium, Salicylate <sup>1</sup> , Sodium, T3 <sup>1</sup> , T3 uptake <sup>1,2</sup> , T4 <sup>1</sup> , Theophylline <sup>1</sup> Tobramycin <sup>1</sup> , Total protein, Transferrin <sup>2</sup> , Triglycerides, TSH1, UIBC <sup>2</sup> , Urea, Uric acid, Zinc.		
<sup>1</sup> Unassayed		
<sup>2</sup> Endogenous analyte		
	6 x 5mL	07 00123 70 04 0030
	20 x 5mL	07 00123 70 04 0100

ITEM	KIT SIZE	PRODUCT CODE
<b>UNILAB P - LYOPHILIZED PATHOLOGICAL CONTROL FOR CLINICAL CHEMISTRY</b>		
Acetaminophen <sup>1</sup> , ALAT, Albumin <sup>2</sup> , Alkaline phosphatase, α-Amylase, Apolipoprotein A1 <sup>2</sup> , Apolipoprotein B <sup>2</sup> , ASAT, Bicarbonate, Total Bile acids, Bilirubin Direct and Total, Calcium, Carbamazepine <sup>1</sup> , Chloride, Cholesterol, Cholinesterase <sup>2</sup> , CK-NAC, CK-MB, Copper, Cortisol <sup>1</sup> , Creatinine, Digoxin <sup>1</sup> , DL-Phenylalanine <sup>1</sup> , Free cholesterol <sup>1,2</sup> , Free glycerol <sup>1,2</sup> , Gamma-GT, Gentamycin <sup>1</sup> , GLDH, Glucose, α-HBDH <sup>2</sup> , HDL <sup>2</sup> , β-Hydroxybutyrate, IgA <sup>2</sup> , IgE <sup>2</sup> , IgG <sup>2</sup> , IgM <sup>2</sup> , Iron, Lactate, LDH, LDL <sup>2</sup> , Lipase, Lithium, Magnesium, Pancreatic amylase, Phenytoin <sup>1</sup> , Phospholipids <sup>2</sup> , Phosphorus, Potassium, Salicylate <sup>1</sup> , Sodium, T3 <sup>1</sup> , T3 uptake <sup>1,2</sup> , T4 <sup>1</sup> , Theophylline <sup>1</sup> Tobramycin <sup>1</sup> , Total protein, Transferrin <sup>2</sup> , Triglycerides, TSH1, UIBC <sup>2</sup> , Urea, Uric acid, Zinc.		
<sup>1</sup> Unassayed		
<sup>2</sup> Endogenous analyte		
	6 x 5mL	07 00124 70 04 0030
	20 x 5mL	07 00124 70 04 0100

ITEM	KIT SIZE	PRODUCT CODE
<b>UNILAB LIPID - LYOPHILIZED LIPID CONTROL</b>		
Apolipoprotein A1, Apolipoprotein B, Cholesterol, Free cholesterol <sup>1</sup> , HDL, LDL, Lp-PLA2, NEFA, Phospholipids, Triglycerides		
<sup>1</sup> Unassayed		
Level 1	3 x 3mL	07 00129 70 04 0009
Level 2	3 x 3mL	07 00130 70 04 0009

ITEM	KIT SIZE	PRODUCT CODE
<b>TRULAB PROTEIN - LIQUID STABLE PROTEIN CONTROL</b>		
Albumin, α-1 Acid glycoprotein, α-1-Antitrypsin, α-2-Macroglobulin, Antistreptolysin O, Antithrombin III, β-2-Microglobulin, C3c, C4, Ceruloplasmin, CRP, Ferritin, Haptoglobin, IgA, IgE, IgG, IgM, Kappa light chains, Lambda light chains, Myoglobin, Prealbumin, Retinol binding protein, RF, Transferrin		
Level 1	3 x 1mL	07 00127 70 04 0003
Level 2	3 x 1mL	07 00128 70 04 0003

ITEM	KIT SIZE	PRODUCT CODE
<b>UNILAB URINE - LIQUID STABLE</b>		
α-Amylase, Microalbumin, BUN, Calcium, Chloride, Creatinine, Glucose, HCG (qualitative), Magnesium, Phosphorus, Potassium, Sodium, Total protein, Urea, Uric acid		
Level 1	6 x 5mL	07 00125 70 04 0030
	20 x 5mL	07 00125 70 04 0100
Level 2	6 x 5mL	07 00126 70 04 0030
	20 x 5mL	07 00126 70 04 0100

ITEM	KIT SIZE	PRODUCT CODE
<b>UNILAB MICROALBUMIN - LIQUID STABLE</b>		
Level 1	3 x 1mL	07 00131 70 04 0003
Level 2	3 x 1mL	07 00132 70 04 0003

ITEM	KIT SIZE	PRODUCT CODE
<b>UNILAB BICARBONATE</b>		
One Level	3 x 3mL	06 00133 70 04 0009

ITEM	KIT SIZE	PRODUCT CODE
<b>UNILAB BICARBONATE - LIQUID STABLE</b>		
One Level	3 x 3mL	07 00133 70 04 0009

## CONTROLS

ITEM	KIT SIZE	PRODUCT CODE
<b>UNILAB CRP - LIQUID STABLE. FOR USE WITH CRP AND CRP HS</b>		
Level 1	3 x 2mL	07 00134 70 04 0006
Level 2	3 x 2mL	07 00135 70 04 0006
<b>UNILAB CRP HS - LIQUID STABLE. CONTROLS FOR CRP HS</b>		
Level 1	3 x 1mL	07 00136 70 04 0003
Level 2	3 x 1mL	07 00137 70 04 0003

ITEM	KIT SIZE	PRODUCT CODE
<b>UNILAB CYSTATIN C - LIQUID STABLE</b>		
Level 1	3 x 1mL	07 00429 70 04 0003
Level 2	3 x 1mL	07 00430 70 04 0003

ITEM	KIT SIZE	PRODUCT CODE
<b>UNILAB D-DIMER - LYOPHILIZED</b>		
Level 1	2 x 0,5mL	07 00309 70 04 0001
Level 2	2 x 0,5mL	07 00310 70 04 0001

ITEM	KIT SIZE	PRODUCT CODE
<b>UNILAB ETHANOL - LIQUID STABLE</b>		
One Level	10 x 1mL	07 00314 70 04 0010

ITEM	KIT SIZE	PRODUCT CODE
<b>UNILAB HBA1C</b>		
Level 1	4 x 0,25mL	07 00139 70 04 0001
Level 2	4 x 0,25mL	07 00140 70 04 0001

ITEM	KIT SIZE	PRODUCT CODE
<b>UNILAB HBA1C - LYOPHILIZED</b>		
Level 1	6 x 1mL	07 00423 70 04 0006
Level 2	6 x 1mL	07 00423 70 04 0006

ITEM	KIT SIZE	PRODUCT CODE
<b>UNILAB HOMOCYSTEINE - LIQUID STABLE</b>		
Level 1	3 x 1mL	07 00425 70 04 0003
Level 2	3 x 1mL	07 00426 70 04 0003

ITEM	KIT SIZE	PRODUCT CODE
<b>UNILAB LP(a) - LYOPHILIZED</b>		
Level 1	3 x 1mL	07 00156 70 04 0003
Level 2	3 x 1mL	07 00157 70 04 0003

ITEM	KIT SIZE	PRODUCT CODE
<b>GLUCOSE HEMOLYZING SOLUTION - FOR USE WITH GLUCOSE</b>		
	1 x 500mL	07 00427 70 04 0500

ITEM	KIT SIZE	PRODUCT CODE
<b>HBA1C HEMOLYZING SOLUTION</b>		
	1 x 500mL	02 00313 70 04 0500

ITEM	KIT SIZE	PRODUCT CODE
<b>PYRIDOXAL-5-PHOSPHATE</b>		
	6 x 3mL	01 00120 70 04 0018



## MULTI PURPOSE KITS

CLINICAL CHEMISTRY	KIT SIZE	PRODUCT CODE
Folate	R1a 20mL / R1b 0,5mL / R2 15mL / R3 8,5mL	01 00404 70 04 0050
Glycated Serum Protein	R1 2 x 22mL / R2 2 x 7,5mL	01 00341 70 04 0060
Lithium (Enzymatic)	R1 2 x 20mL / R2 1 x 10mL	01 00033 70 04 0050
25-OH Vitamin D	R1 1 x 40mL / R2 1 x 10mL	01 00403 70 04 0050

IMMUNOTURBIDIMETRY	KIT SIZE	PRODUCT CODE
alpha- Fetoprotein (AFP)	R1 1 x 60mL / R2 1 x 16mL	04 00405 70 04 0076
CEA	R1 1 x 60mL / R2 1 x 16mL	04 00406 70 04 0076
Fibrinogen	R1 1 x 48mL / R2 1 x 16mL	04 00407 70 04 0064
Troponin I	R1 1 x 40mL / R2 1 x 10mL	04 00412 70 04 0050

THERAPEUTIC DRUG MONITORING	KIT SIZE	CALIBRATOR	CONTROLS	PRODUCT CODE
Carbamazepine	R1 2 x 12mL / R2 2 x 5mL	UniCal TD	UniLab (TD1, TD2, TD3)	05 00090 70 13 0065
Digoxin	R1 2 x 8mL / R2 2 x 6mL	UniCal TD	UniLab (TD1, TD2, TD3)	05 00170 70 13 0054
Gentamicin	R1 2 x 15mL / R2 2 x 6mL	UniCal TD	UniLab (TD1, TD2, TD3)	05 00171 70 13 0054
Phenobarbital	R1 2 x 17mL / R2 2 x 6mL	UniCal TD	UniLab (TD1, TD2, TD3)	05 00172 70 13 0054
Phenytoin	R1 1 x 17mL / R2 1 x 6mL	UniCal TD	UniLab (TD1, TD2, TD3)	05 00288 70 13 0054
Valporic Acid	R1 2 x 12mL / R2 2 x 5mL	UniCal TD	UniLab (TD1, TD2, TD3)	05 00290 70 13 0054

## DRUGS OF ABUSE

6-ACETYLMORPHINE	SIZE	CALIBRATOR (NG/ML)	CONTROL (NG/ML)	PRODUCT CODE
6-Acetylmorphine EIA Kit 100mL / 37,5mL				04 00097 70 04 0137
6-Acetylmorphine EIA Kit 1000mL / 375mL				04 00097 70 04 1375
<b>Cut-off 200</b>				
6-AM Negative L1	5mL	0		17 00299 86 04 0005
6-AM Calibrator Low 5 L2	5mL	5		17 00293 87 04 0005
6-AM Calibrator Cut-off 10 L3	5mL	10		17 00294 88 04 0005
6-AM Calibrator Intermediate 20 L4	5mL	20		17 00295 89 04 0005
6-AM Calibrator High 40 L5	5mL	40		17 00296 90 04 0005
6-AM Control Low 7,5 L1	5mL		7.5	17 00297 86 04 0005
6-AM Control High 12,5 L2	5mL		12.5	17 00298 87 04 0005
UniCal / UniLab 6-Acetylmorphine 10 Kit	7 x 5mL	0, 5, 10, 20, 40	7.5, 12.5	17 00351 70 04 0035

### AMPHETAMINE 500

Amphetamine 500 EIA Kit 100 mL / 37,5 mL				04 00079 70 04 0137
Amphetamine 500 EIA Kit 1000 mL / 375 mL				04 00079 70 04 1375

DOA Negative Calibrator L1	5mL	0		17 00001 86 04 0005
AMP 500 Calibrator Low 250 L2	5mL	250		17 00102 87 04 0005
AMP 500 Calibrator Cut-off 500 L3	5mL	500		17 00103 88 04 0005
AMP 500 Calibrator Intermediate 1000 L4	5mL	1000		17 00104 89 04 0005
AMP 500 Calibrator High 2000 L5	5mL	2000		17 00105 90 04 0005
AMP 500 Control Low 375 L1	5mL		375	17 00107 86 04 0005
AMP 500 Control High 625 L2	5mL		625	17 00108 87 04 0005
UniCal / UniLab AMP 500 Kit	7 x 5mL	0, 250, 500, 1000, 2000	375, 625	17 00276 70 04 0035

### AMPHETAMINE 1000

Amphetamine 1000 EIA Kit 100mL / 37,5mL				04 00430 70 04 0137
Amphetamine 1000 EIA Kit 1000mL / 375mL				04 00430 70 04 1375

DOA Negative Calibrator L1	5mL	0		17 00001 86 04 0005
AMP 1000 Calibrator Low 500 L2	5mL	500		17 00042 87 04 0005
AMP 1000 Calibrator Cut-off 1000 L3	5mL	1000		17 00043 88 04 0005
AMP 1000 Calibrator Intermediate 1500 L4	5mL	1500		17 00044 89 04 0005
AMP 1000 Calibrator High 2000 L5	5mL	2000		17 00045 90 04 0005
AMP 1000 Control Low 750 L1	5mL		750	17 00047 86 04 0005
AMP 1000 Control High 1250 L2	5mL		1250	17 00048 87 04 0005
UniCal / UniLab AMP 1000 Kit	7 x 5mL	0, 500, 1000, 1500, 2000	750, 1250	17 00429 70 04 0035

### BARBITURATES

Barbiturates EIA Kit 100mL / 37,5mL				04 00080 70 04 0137
Barbiturates EIA Kit 1000mL / 375mL				04 00080 70 04 1375

#### Cut-off 200

UniCal DOA Negative L1	5mL	0		17 00001 86 04 0005
BAR Calibrator L2/Control I 100	5mL	100	100	17 00142 87 04 0005
BAR Calibrator/Control 200 L3	5mL	200		17 00143 88 04 0005
BAR Calibrator L4/Control II 300	5mL	300	300	17 00144 89 04 0005
BAR Calibrator 1000 High L5	5mL	1000		17 00145 90 04 0005
UniCal / UniLab BAR 200 Kit	5 x 5mL	0, 100, 200, 300, 1000	100, 300	17 00277 70 04 0025

#### Cut-off 300

UniCal DOA Negative L1	5mL	0		17 00001 86 04 0005
BAR Calibrator L2/Control I 100	5mL	100		17 00142 87 04 0005
BAR Calibrator/Control 200 L3	5mL	200	200	17 00143 88 04 0005
BAR Calibrator L4/Control II 300	5mL	300		17 00144 89 04 0005
BAR Calibrator 1000 High L5	5mL	1000		17 00145 90 04 0005
BAR Control III 400			400	17 00146 91 04 0005
UniCal / UniLab BAR 300 Kit	6 x 5mL	0, 100, 200, 300, 1000	200, 400	17 00411 70 04 0030

## DRUGS OF ABUSE

BENZODIAZEPINES	SIZE	CALIBRATOR (NG/ML)	CONTROL (NG/ML)	PRODUCT CODE
Benzodiazepines EIA Kit 100mL / 37,5mL				04 00081 70 04 0137
Benzodiazepines EIA Kit 1000mL / 375mL				04 00081 70 04 1375

#### Cut-off 200

DOA Negative L1	5mL	0		17 00001 86 04 0005
BZO Calibrator L2/Control 100 I	5mL	100	100	17 00132 87 04 0005
BZO Calibrator L3/Control 200 II	5mL	200		17 00133 88 04 0005
BZO Calibrator L4/Control 300 III	5mL		300	17 00134 89 04 0005
BZO Calibrator 1000 L5	5mL	1000		17 00135 90 04 0005
UniCal / UniLab BZO 200 Kit	5 x 5mL	0, 100, 200, 300, 1000	100, 300	17 00412 70 04 0025

#### Cut-off 300

DOA Negative L1	5mL	0		17 00001 86 04 0005
BZO Calibrator L2/Control 100 I	5mL	100		17 00132 87 04 0005
BZO Calibrator L3/Control 200 II	5mL	200	200	17 00133 88 04 0005
BZO Calibrator L4/Control 300 III	5mL	300		17 00134 89 04 0005
BZO Calibrator 1000 L5	5mL	1000		17 00135 90 04 0005
BZO Control 400 IIII	5mL		400	17 00136 90 04 0005
UniCal / UniLab BZO 300 Kit	6 x 5mL	0, 100, 200, 300, 1000	200, 400	17 00279 70 04 0030

### BUPRENORPHINE

Buprenorphine EIA Kit 100mL / 37,5mL				04 00082 70 04 0137
Buprenorphine EIA Kit 1000mL / 375mL				04 00082 70 04 1375

#### Cut-off 5

DOA Negative L1	5mL	0		17 00001 86 04 0005
BUP Calibrator Cut-off 5 L2	5mL	5		17 00273 87 04 0005
BUP Calibrator Intermediate 10 L3	5mL	10		17 00275 88 04 0005
BUP Calibrator Intermediate 20 L5	5mL	20		17 00277 89 04 0005
BUP Calibrator High 40 L6	5mL	40		17 00278 90 04 0005
BUP Control 3 L1	5mL		3	17 00272 86 70 0005
BUP Control 7 L2	5mL		7	17 00274 87 04 0005
UniCal / UniLab BUP 5 Kit	7 x 5mL	0, 5, 10, 20, 40	3, 7	17 00278 70 04 0035

#### Cut-off 10

DOA Negative L1	5mL	0		17 00001 86 04 0005
BUP Calibrator Cut-off 5 L2	5mL	5		17 00273 87 04 0005
BUP Calibrator Intermediate 10 L3	5mL	10		17 00275 88 04 0005
BUP Calibrator Intermediate 20 L5	5mL	20		17 00277 89 04 0005
BUP Calibrator High 40 L6	5mL	40		17 00278 90 04 0005
BUP Calibrator High 75 L7	5mL	75		17 00279 91 04 0005
BUP Control 7 L2	5mL		7	17 00274 87 04 0005
BUP Control 13 L2	5mL		13	17 00276 88 04 0005
UniCal / UniLab BUP 10 Kit	8 x 5mL	0, 5, 10, 20, 40, 75	7, 13	17 00413 70 04 0040



## DRUGS OF ABUSE

CANNABINOIDS (THC)	SIZE	CALIBRATOR (NG/ML)	CONTROL (NG/ML)	PRODUCT CODE
Cannabinoids (THC) EIA Kit 100mL / 37,5mL				04 00083 70 04 0137
Cannabinoids (THC) EIA Kit 1000mL / 375mL				04 00083 70 04 1375
<b>Cut-off 25</b>				
THC/SPICE Negative Calibrator	5mL	0		17 00353 70 04 0005
THC Calibrator Low 12.5 L2	5mL	12.5		17 00072 87 04 0005
THC Calibrator Low 25 L2	5mL	25		17 00073 87 04 0005
THC Calibrator 50 L3	5mL	50		17 00075 88 04 0005
THC Control Low 18,75 L1	5mL		18.75	17 00006 86 04 0005
THC Control High 31,25 L2	5mL		31.25	17 00074 87 04 0005
UniCal / UniLab THC 25 Kit	6 x 5mL	0, 12.5, 25, 50	18.75, 31.25	17 00414 70 04 0030
<b>Cut-off 50</b>				
THC/SPICE Negative Calibrator	5mL	0		17 00353 70 04 0005
THC Calibrator Low 25 L2	5mL	25		17 00073 87 04 0005
THC Calibrator 50 L3	5mL	50		17 00075 88 04 0005
THC Calibrat or/Control Intermediate 75 L4	5mL	75		17 00076 89 04 0005
THC Calibrator High 100 L5	5mL	100		17 00077 90 04 0005
THC Control Low 37,5 L1	5mL		37.5	17 00007 86 04 0005
THC Control High 62,5 L2	5mL		62.5	17 00008 87 04 0005
UniCal / UniLab THC 50 Kit	7 x 5mL	0, 25, 50, 75, 100	37.5, 62.5	17 00285 70 04 0035
<b>Cut-off 100</b>				
THC/SPICE Negative Calibrator	5mL	0		17 00353 70 04 0005
THC Calibrator 50 L3	5mL	50		17 00075 88 04 0005
THC Calibrator High 100 L5	5mL	100		17 00077 90 04 0005
THC Calibrator Intermediate 150 L4	5mL	150		17 00078 89 04 0005
THC Calibrator High 200 L5	5mL	200		17 00079 90 04 0005
THC Calibrator/Control Intermediate 75 L4	5mL		75	17 00076 89 04 0005
THC Control High 125 L2	5mL		125	17 00009 87 04 0005
UniCal / UniLab THC 100 Kit	7 x 5mL	0, 50, 100, 200	75, 125	17 00415 70 04 0035

### CARISOPRODOL METABOLITE

Carisoprodol Metabolite EIA kit 100ml / 37,5ml				04 00507 70 04 0137
Carisoprodol Metabolite EIA kit 1000ml / 375ml				04 00508 70 04 1375
<b>DOA Negative L1</b>				
DOA Negative L1	5mL	0		17 00001 86 04 0005
Carisoprodol Calibrator Low 50 ng/ml	5mL	50		17 00509 87 70 0005
Carisoprodol Calibrator Cut-Off 100 ng/ml	5mL	100		17 00510 88 70 0005
Carisoprodol Calibrator Intermediate 200 ng/ml	5mL	200		17 00511 89 70 0005
Carisoprodol Calibrator High 400 ng/ml	5mL	400		17 00512 90 70 0005
Carisoprodol Control L1 75 ng/ml	5mL		75	17 00513 86 70 0005
Carisoprodol Control L2 125 ng/ml	5mL		124	17 00514 86 70 0005

### COCAIN METABOLITE (BENZOYLECGONINE) 150

Cocain Metabolite (Benzoylecgonine) 150 EIA Kit 100mL / 37,5mL				04 00416 70 04 0137
Cocain Metabolite (Benzoylecgonine) 150 EIA Kit 1000mL / 375mL				04 00416 70 04 1375
<b>DOA Negative L1</b>				
DOA Negative L1	5mL	0		17 00001 86 04 0005
COC 150 Calibrator 75 L2	5mL	75		17 00342 87 04 0005
COC 150 Calibrator Cut-off 150 L3	5mL	150		17 00343 88 04 0005
COC 150 Calibrator Intermediate 300 L4	5mL	300		17 00344 89 04 0005
COC 150 Control High 1000 L5	5mL	1000		17 00345 70 04 0005
COC 150 Control Low 112.5 L1	5mL		112.5	17 00347 86 04 0005
COC 150 Control High 187.5 L2	5mL		187.5	17 00348 87 04 0005
UniCal / UniLab COC 150 Kit	7 x 5mL	0, 75, 150, 300, 1000	112.5, 187.5	17 00417 70 04 0035

## DRUGS OF ABUSE

COCAIN METABOLITE (BENZOYLECGONINE) 300	SIZE	CALIBRATOR (NG/ML)	CONTROL (NG/ML)	PRODUCT CODE
Cocain Metabolite (Benzoylecgonine) 300 EIA Kit 100mL / 37,5mL				04 00084 70 04 0137
Cocain Metabolite (Benzoylecgonine) 300 EIA Kit 1000mL / 375mL				04 00084 70 04 1375
<b>DOA Negative L1</b>				
DOA Negative L1	5mL	0		17 00001 86 04 0005
COC 300 Calibrator Low 150 L2	5mL	150		17 00032 87 04 0005
COC 300 Calibrator Cut-off 300 L3	5mL	300		17 00033 88 04 0005
COC 300 Calibrator High 1000 L4	5mL	1000		17 00034 89 04 0005
COC 300 Control Low 225 L1	5mL		225	17 00037 86 04 0005
COC 300 Control High 375 L2	5mL		375	17 00038 87 04 0005
UniCal / UniLab COC 300 Kit	6 x 5mL	0, 150, 300, 1000	225, 375	17 00280 70 04 0030

### COTININE

Cotinine EIA Kit 100mL / 37,5mL				04 00085 70 04 0137
Cotinine EIA Kit 1000mL / 375mL				04 00085 70 04 1375
<b>DOA Negative L1</b>				
UniCal DOA Negative L1	5mL	0		17 00001 86 04 0005
COT Calibrator L2/Control I 250	5mL	250	250	17 00232 87 04 0005
COT Calibrator Cut-off 500 L3	5mL	500		17 00233 88 04 0005
COT Calibrator Intermediate 1000 L4	5mL	1000		17 00234 89 04 0005
COT Calibrator High 2000 L5	5mL	2000		17 00235 90 04 0005
COT Control II 750	5mL		750	17 00238 87 04 0005
UniCal / UniLab COT 500 Kit	6 x 5mL	0, 250, 500, 1000, 2000	250, 750	17 00281 70 04 0030

### ECSTASY (MDMA)

Ecstasy (MDMA) EIA Kit 100mL / 37,5mL				04 00086 70 04 0137
Ecstasy (MDMA) EIA Kit 1000mL / 375mL				04 00086 70 04 1375
<b>DOA Negative L1</b>				
DOA Negative L1	5mL	0		17 00001 86 04 0005
MDMA Calibrator Low 100 L2	5mL	100		17 00162 87 04 0005
MDMA Calibrator Cut-off 500 L3	5mL	500		17 00163 88 04 0005
MDMA Calibrator Intermediate 750 L4	5mL	750		17 00164 89 04 0005
MDMA Calibrator High 1000 L5	5mL	1000		17 00165 90 04 0005
MDMA Control Low 375 L1	5mL		375	17 00167 86 04 0005
MDMA Control High 625 L2	5mL		625	17 00168 87 04 0005
UniCal / UniLab MDMA 500 Kit	7 x 5mL	0, 100, 500, 750, 1000	375, 625	17 00282 70 04 0035

### ETHANOL

Ethanol 2 x 20mL / 1 x 10mL				01 00021 70 13 0050
<b>UniCal Ethanol 0.5</b>				
UniCal Ethanol 0.5	10 x 1mL	0,5		07 00287 70 04 0010
UniCal Ethanol 1.0	10 x 1mL	1		07 00288 70 04 0010
UniCal Ethanol 2.0	10 x 1mL	2		07 00289 70 04 0010
UniCal Ethanol 3.0	10 x 1mL	3		07 00290 70 04 0010
UniCal Ethanol 4.0	10 x 1mL	4		07 00291 70 04 0010
UniLab Ethanol	10 x 1mL		0,8	07 00314 70 04 0010

## DRUGS OF ABUSE

ETHYL GLUCORONIDE	SIZE	CALIBRATOR (NG/ML)	CONTROL (NG/ML)	PRODUCT CODE
Ethyl Glucoronide EIA Kit 100mL / 37,5mL				04 00098 70 04 0137
Ethyl Glucoronide EIA Kit 1000mL / 375mL				04 00098 70 04 1375
UniCal DOA Negative L1	5mL	0		17 00292 86 04 0005
ETG Calibrator Low 250 L2	5mL	250		17 00322 87 04 0005
ETG Calibrator Cut-off 1000 L3	5mL	1000		17 00323 88 04 0005
ETG Calibrator Intermediate 2000 L4	5mL	2000		17 00324 89 04 0005
ETG Calibrator Intermediate 3000 L5	5mL	3000		17 00325 90 04 0005
ETG Calibrator High 4000 L6	5mL	4000		17 00326 90 04 0005
ETG Control Low 500 L1	5mL		500	17 00327 86 04 0005
ETG Control High 1500 L2	5mL		1500	17 00328 87 04 0005
UniCal / UniLab ETG 1000 Kit	7 x 5mL	0, 250, 1000, 2000, 3000, 4000	500, 1500	17 00352 70 04 0040

### FENATNYL

Fenatnyl EIA Kit 100mL / 37,5mL				04 00490 70 04 0137
Fenatnyl EIA Kit 1000mL / 375mL				04 00490 70 04 1375

DOA Negative L1	5mL	0		17 00001 86 04 0005
Fentanyl Calibrator Low 2,5 ng/ml	5mL	2,5		17 00492 87 70 0005
Fentanyl Calibrator Cut-Off 5 ng/ml	5mL	5		17 00493 88 70 0005
Fentanyl Calibrator Intermediate 10 ng/ml	5mL	10		17 00494 89 70 0005
Fentanyl Calibrator High 20 ng/ml	5mL	20		17 00495 90 70 0005
Fentanyl Control L1 3,75 ng/ml	5mL		3.75	17 00496 86 70 0005
Fentanyl Control L2 6,25 ng/ml	5mL		6.25	17 00497 87 70 0005

### HYDROCODONE 100

Hydrocodone 100 EIA Kit 100mL / 375mL				04 00095 70 04 0137
Hydrocodone 100 EIA Kit 1000mL / 375mL				04 00095 70 04 1375

UniCal DOA Negative L1	5mL	0		17 00001 86 04 0005
UniCal HDC 100 Calibrator Low 50 L2	5mL	50		17 00382 87 04 0005
UniCal HDC 100 Calibrator Cut-off 100 L3	5mL	100		17 00383 88 04 0005
UniCal HDC 100 Calibrator Intermediate 150 L4	5mL	150		17 00384 89 04 0005
UniCal HDC 100 Calibrator High 300 L5	5mL	300		17 00385 90 04 0005
UniLab HDC 100 Control Low 75 L1	5mL		75	17 00387 86 04 0005
UniLab HDC 100 Control High 125 L2	5mL		125	17 00388 87 04 0005
UniCal / UniLab HDC 100 Kit	7 x 5mL	0, 50, 100, 150, 300	75, 125	17 00349 70 04 0035

### HYDROCODONE 300

Hydrocodone 300 EIA Kit 100mL / 37,5mL				04 00096 70 04 0137
Hydrocodone 300 EIA Kit 1000mL / 375mL				04 00096 70 04 1375

DOA Negative L1	5mL	0		17 00001 86 04 0005
HDC 300 Calibrator Low 150 L2	5mL	150		17 00392 87 04 0005
HDC 300 Calibrator Cut-off 300 L3	5mL	300		17 00393 88 04 0005
HDC 300 Calibrator Intermediate 500 L4	5mL	500		17 00394 89 04 0005
HDC 300 Calibrator High 800 L5	5mL	800		17 00395 90 04 0005
HDC 300 Control Low 225 L1	5mL		225	17 00397 86 04 0005
HDC 300 Control High 375 L2	5mL		375	17 00398 87 04 0005
UniCal / UniLab HDC 300 Kit	7 x 5mL	0, 150, 300, 500, 800	225, 375	17 00350 70 04 0035

## DRUGS OF ABUSE

METAMPHETAMINE	SIZE	CALIBRATOR (NG/ML)	CONTROL (NG/ML)	PRODUCT CODE
Metamphetamine EIA Kit 100mL / 37,5mL				04 00092 70 04 0137
Metamphetamine EIA Kit 1000mL / 375mL				04 00092 70 04 1375
DOA Negative L1	5mL	0		17 00001 86 04 0005
MAMP Calibrator Low 250 L2	5mL	250		17 00352 87 04 0005
MAMP Calibrator Cut-off 500 L3	5mL	500		17 00353 88 04 0005
MAMP Calibrator Intermediate 1000 L4	5mL	1000		17 00354 89 04 0005
MAMP Calibrator High 2000 L5	5mL	2000		17 00355 90 04 0005
MAMP Control Low 375 L1	5mL		375	17 00357 86 04 0005
MAMP Control High 625 L2	5mL		625	17 00358 87 04 0005
UniCal / UniLab MAMP 500 Kit	7x5 ml	0, 250, 500, 1000, 2000	375, 625	17 00346 70 04 0035

### METHADONE

Methadone EIA Kit 100mL / 37,5mL				04 00087 70 04 0137
Methadone EIA Kit 1000mL / 375mL				04 00087 70 04 1375

UniCal DOA Negative L1	5mL	0		17 00001 86 04 0005
MTD Calibrator Low 150 L2	5mL	150		17 00112 87 04 0005
MTD Calibrator Cut-off 300 L3	5mL	300		17 00113 88 04 0005
MTD Calibrator Intermediate 600 L4	5mL	600		17 00114 89 04 0005
MTD Calibrator High 1000 L5	5mL	1000		17 00115 90 04 0005
MTD Control Low 225 L1	5mL		225	17 00117 86 04 0005
MTD Control High 375 L2	5mL		375	17 00118 87 04 0005
UniCal / UniLab MTD 300 Kit	7 x 5mL	0, 150, 300, 600, 1000	225, 375	17 00283 70 04 0035

### METHADONE METABOLITE (EDDP)

Methadone Metabolite (EDDP) EIA Kit 100mL / 37,5mL				05 00334 70 13 0137
Methadone Metabolite (EDDP) EIA Kit 1000mL / 375mL				05 00334 70 13 1375

DOA Negative L1	5mL	0		17 00001 86 04 0005
EDDP Calibrator Low 150 L2	5mL	150		17 00405 87 04 0005
EDDP Calibrator Cut-off 300 L3	5mL	300		17 00406 88 04 0005
EDDP Calibrator Interm. 600 L4	5mL	600		17 00407 89 04 0005
EDDP Calibrator High 1000 L5	5mL	1000		17 00408 90 04 0005
EDDP Control Low 225 L1	5mL		225	17 00409 86 04 0005
EDDP Control High 375 L2	5mL		375	17 00410 87 04 0005
UniCal / Unilab EDDP 300 Kit	7 x 5mL	0, 150, 300, 600, 1000	225,375	17 00404 70 04 0035

### OPIATES 300

Opiates 300 EIA Kit 100mL / 37,5mL				04 00088 70 04 0137
Opiates 300 EIA Kit 1000mL / 375mL				04 00088 70 04 1375

DOA Negative L1	5mL	0		17 00001 86 04 0005
OPI 300 Calibrator Low 150 L2	5mL	150		17 00022 87 04 0005
OPI 300 Calibrator Cut-off 300 L3	5mL	300		17 00023 88 04 0005
OPI 300 Calibrator Intermediate 600 L4	5mL	600		17 00024 89 04 0005
OPI 300 Calibrator High 1000 L5	5mL	1000		17 00025 90 04 0005
OPI 300 Control Low 225 L1	5mL		225	17 00027 86 04 0005
OPI 300 Control High 375 L2	5mL		375	17 00028 87 04 0005
UniCal / UniLab OPI 300 Kit	7 x 5mL	0, 150, 300, 600, 1000	225, 375	17 00284 70 04 0035

## DRUGS OF ABUSE

OPIATES 2000	SIZE	CALIBRATOR (NG/ML)	CONTROL (NG/ML)	PRODUCT CODE
Opiates 2000 EIA Kit 100mL / 37,5mL				04 00426 70 04 0137
Opiates 2000 EIA Kit 1000mL / 375mL				04 00426 70 04 1375
<b>DOA Negative L1</b>				
DOA Negative L1	5mL	0		17 00001 86 04 0005
OPI 2000 Calibrator Low 1000 L2	5mL	1000		17 00332 87 04 0005
OPI 2000 Calibrator Cut-off 2000 L3	5mL	2000		17 00333 88 04 0005
OPI 2000 Calibrator Intermediate 4000 L4	5mL	4000		17 00334 89 04 0005
OPI 2000 Calibrator High 6000 L5	5mL	6000		17 00335 90 04 0005
OPI 2000 Control Low 1500 L1	5mL		1500	17 00337 86 04 0005
OPI 2000 Control High 2500 L2	5mL		2500	17 00338 87 04 0005
UniCal / UniLab OPI 2000 Kit	7 x 5mL	0, 1000, 2000, 4000, 6000	1500, 2500	17 00427 70 04 0035

### OXYCODONE

Oxycodone EIA Kit 100mL / 37,5mL				04 00093 70 04 0137
Oxycodone EIA Kit 1000mL / 375mL				04 00093 70 04 1375

#### Cut-off 100

UniCal DOA Negative L1	5mL	0		17 00001 86 04 0005
OXY 100 Calibrator Low 50 L2	5mL	50		17 00252 87 04 0005
OXY 100 Calibrator Cut-off 100 L3	5mL	100		17 00243 88 04 0005
OXY 100 Calibrator Cut-off 300 L4	5mL	300		17 00246 88 04 0005
OXY 100 Calibrator Intermediate 500 L5	5mL	500		17 00248 90 04 0005
OXY 100 Calibrator High 800 L6	5mL	800		17 00249 91 04 0005
OXY 100 Control Low 75 L1	5mL		75	17 00242 86 04 0005
OXY 100 Control High 125 L2	5mL		125	17 00244 87 04 0005
UniCal / UniLab OXY 100 Kit	8 x 5mL	0, 50, 100, 300, 500, 800	75, 125	17 00347 70 04 0040

#### Cut-off 300

UniCal DOA Negative L1	5mL	0		17 00001 86 04 0005
OXY 300 Calibrator Low 50 L2	5mL	50		17 00252 87 04 0005
OXY 300 Calibrator Cut-off 100 L3	5mL	100		17 00243 88 04 0005
OXY 300 Calibrator Cut-off 300 L4	5mL	300		17 00246 88 04 0005
OXY 300 Calibrator Intermediate 500 L5	5mL	500		17 00248 90 04 0005
OXY 300 Calibrator High 800 L6	5mL	800		17 00249 91 04 0005
OXY 300 Control Low 225 L1	5mL		225	17 00245 89 04 0005
OXY 300 Control High 375 L2	5mL		375	17 00247 89 04 0005
UniCal / UniLab OXY 300 Kit	8 x 5mL	0, 50, 100, 300, 500, 800	225, 375	17 00428 70 04 0040

### PHENCYCLIDINE

Phencyclidine EIA Kit 100mL / 37,5mL				04 00091 70 04 0137
Phencyclidine EIA Kit 1000mL / 375mL				04 00091 70 04 1375

<b>DOA Negative L1</b>				
DOA Negative L1	5mL	0		17 00001 86 04 0005
PCP Calibrator Low 12,5 L2	5mL	12,5		17 00012 87 04 0005
PCP Calibrator Cut-off 25 L3	5mL	25		17 00013 88 04 0005
PCP Calibrator Intermediate 50 L4	5mL	50		17 00014 89 04 0005
PCP Calibrator High 100 L5	5mL	100		17 00015 90 04 0005
PCP Control Low 18 L1	5mL		18	17 00017 86 04 0005
PCP Control High 32 L2	5mL		32	17 00018 87 04 0005
UniCal / UniLab PCP 25 Kit	7 x 5mL	0, 12,5, 25, 50, 100	18, 32	17 00345 70 04 0035

## DRUGS OF ABUSE

PROPOXYPHENE	SIZE	CALIBRATOR (NG/ML)	CONTROL (NG/ML)	PRODUCT CODE
Propoxyphene EIA Kit 100mL / 37,5mL				04 00090 70 04 0137
Propoxyphene EIA Kit 1000mL / 375mL				04 00090 70 04 1375
<b>DOA Negative L1</b>				
DOA Negative L1	5mL	0		17 00001 86 04 0005
PPX Calibrator Low 150 L2	5mL	150		17 00122 87 04 0005
PPX Calibrator Cut-off 300 L3	5mL	300		17 00123 88 04 0005
PPX Calibrator Intermediate 600 L4	5mL	600		17 00124 89 04 0005
PPX Calibrator High 1000 L5	5mL	1000		17 00125 90 04 0005
PPX Control Low 225 L1	5mL		225	17 00127 86 04 0005
PPX Control High 375 L2	5mL		375	17 00128 87 04 0005
UniCal / UniLab PPX 300 Kit	7 x 5mL	0, 150, 300, 600, 1000	225, 375	17 00344 70 04 0035

### SPICE I

Spice I (JWH-018) EIA Kit 100mL / 37,5mL				04 00089 70 04 0137
Spice I (JWH-018) EIA Kit 1000mL / 375mL				04 00089 70 04 1375

<b>THC/SPICE Negative Calibrator</b>				
THC/SPICE Negative Calibrator	5mL	0		17 00353 86 04 0005
SPICE I Calibrator Low 10 L2	5mL	10		17 00402 87 70 0005
SPICE I Calibrator Cut-off 20 L3	5mL	20		17 00403 88 70 0005
SPICE I Calibrator Intermediate 35 L4	5mL	35		17 00404 89 70 0005
SPICE I Calibrator High 50 L5	5mL	50		17 00405 90 70 0005
SPICE I Control Low 15 L1	5mL		15	17 00407 86 70 0005
SPICE I Control High 25 L2	5mL		25	17 00408 87 70 0005
UniCal / Unilab SPICE I 20 Kit	7 x 5mL	0, 10, 20, 35, 50	15, 25	17 00343 70 04 0035

### SPICE II

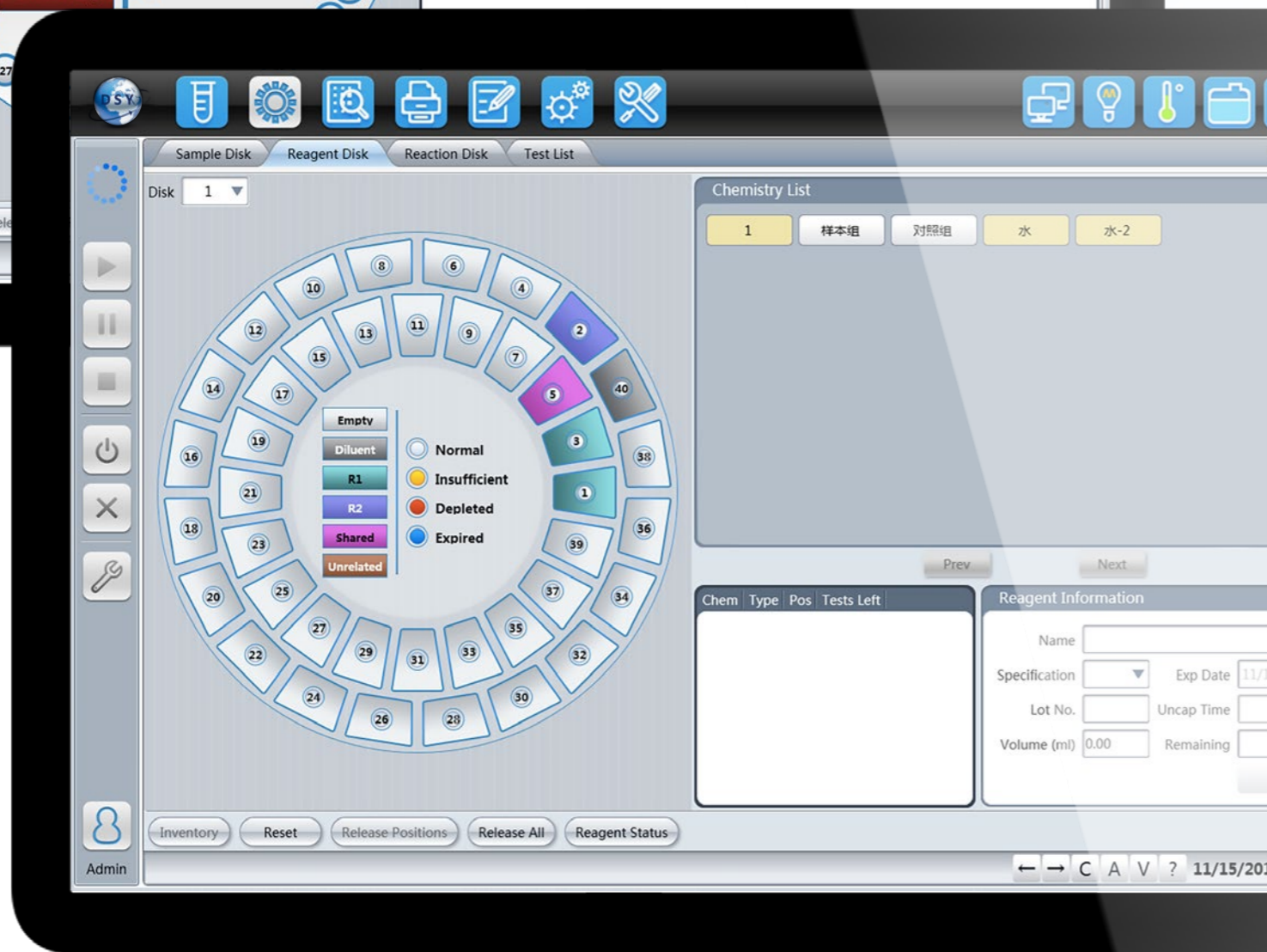
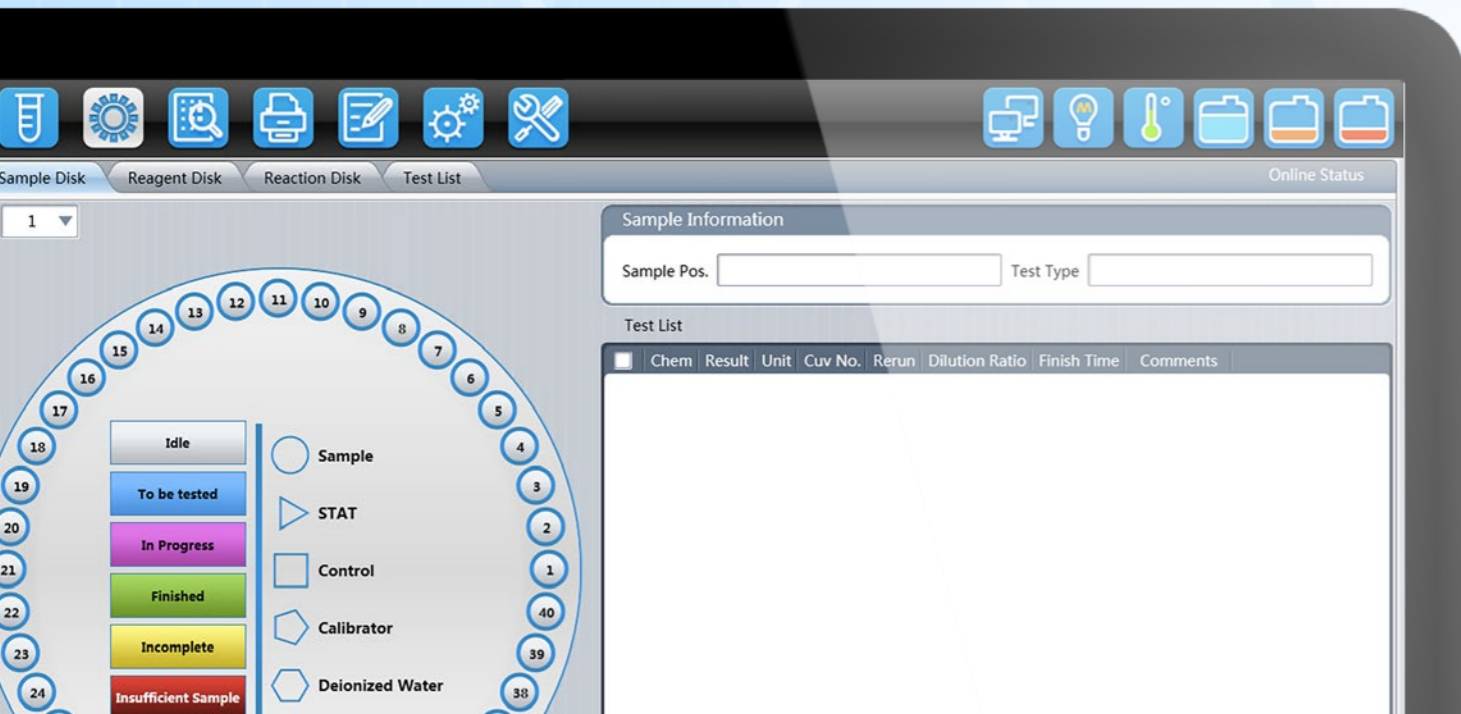
Spice II (UR-144/XLR-11) EIA Kit 100mL / 37,5mL				04 00099 70 04 0137
Spice II (UR-144/XLR-11) EIA Kit 1000mL / 375mL				04 00099 70 04 1375

<b>THC/SPICE Negative Calibrator</b>				
THC/SPICE Negative Calibrator	5mL	0		17 00353 86 04 0005
SPICE II Calibrator Low 10 L2	5mL	10		17 00422 87 70 0005
SPICE II Calibrator Cut-off 20 L3	5mL	20		17 00423 88 70 0005
SPICE II Calibrator Intermediate 35 L4	5mL	35		17 00424 89 70 0005
SPICE II Calibrator High 50 L5	5mL	50		17 00425 90 70 0005
SPICE II Control Low 15 L1	5mL		15	17 00427 86 70 0005
SPICE II Control High 25 L2	5mL		25	17 00428 87 70 0005
UniCal / Unilab SPICE II 20 Kit	7 x 5mL	0, 10, 20, 35, 50	15, 25	17 00354 70 04 0035

### TRAMADOL

Tramadol EIA kit 100ml / 37,5ml				04 00437 70 04 0137
Tramadol EIA kit 1000ml / 375ml				04 00437 70 04 1375

<b>DOA Negative L1</b>				
DOA Negative L1	5mL	0		17 00001 86 04 0005
Tramadol Calibrator Low 50	5mL	50		17 00484 87 70 0005
Tramadol Calibrator Cut-Off 100	5mL	100		17 00474 88 70 0005
Tramadol Calibrator Intermediate 225	5mL	225		17 00485 89 70 0005
Tramadol Calibrator High 400	5mL	400		17 00486 90 70 0005
Tramadol Control L1 75	5mL		75	17 00487 86 70 0005
Tramadol Control L2 125	5mL		125	17 00488 87 70 0005



## ADULTERATION KITS

### ALDEHYDE ASSAY

#### KIT SIZE

#### PRODUCT CODE

The Aldehyde Assay quantitatively determines the presence of aldehydes in urine specimens submitted for DAU Testing. This assay is for use on automated chemistry analyzers. The presence of some aldehydes including glutaraldehyde in a urine sample may yield false negative DAU assay results. According to SAMHSA a urine specimen is defined as being adulterated if the presence of Glutaraldehyde is verified using a colorimetric initial test for Aldehydes, and a non-colorimetric confirmatory second test. In addition, SAMHSA rules state that a sample is invalid if the presence of Glutaraldehyde is verified using a colorimetric Aldehyde assay for the initial and confirmatory second test.

R1 4 x 50mL / R2 4 x 50mL

04 00395 70 13 0200

#### Calibrator

UniCal Adulterated 0mg/L	1 x 25mL	06 00401 70 86 0025
UniCal Aldehyde 100mg/L	1 x 100mL	06 00395 70 87 0100

#### Controls

UniLab Aldehyde 75mg/dL	1 x 100mL	07 00395 70 86 0100
UniLab Aldehyde 125mg/dL	1 x 100mL	07 00395 70 87 0100

### CHROMAT ASSAY

#### KIT SIZE

#### PRODUCT CODE

The Chromate Assay Kit detects the presence of chromate added to urine specimens submitted for DAU testing. This assay is for use on automated chemistry analyzers. According to SAMHSA a urine specimen is defined as being adulterated if the concentration of Chromium (VI) is equal to or greater than 50 mg/L when using a colorimetric initial test and a non-colorimetric confirmatory second test. In addition, SAMHSA rules state that a sample is invalid if the concentration of Chromium (VI) is equal to or greater than 50 mg/L when using a colorimetric assay for the initial and confirmatory second test.

R1 4 x 25mL / R2 4 x 25mL

04 00396 70 13 0100

#### Calibrator

UniCal Adulterated 0mg/L	1 x 25mL	06 00401 70 86 0025
UniCal Chromat 100mg/L	1 x 25mL	06 00396 70 87 0100

#### Controls

UniLab Adulterated Level 1	1 x 25mL	07 00401 70 86 0025
UniLab Adulterated Level 2	1 x 25mL	07 00401 70 87 0025
UniLab Adulterated Level 3	1 x 25mL	07 00401 70 88 0025
UniLab Adulterated Level 1-3	3 x 25mL	07 00401 70 89 0025

### CHREATININE ASSAY

#### KIT SIZE

#### PRODUCT CODE

The Creatinine Assay Kit quantitatively determines the creatinine level of urine specimens submitted for DAU testing. This assay is for use on automated chemistry analyzers. According to SAMHSA a urine specimen is defined as being dilute if the creatinine concentration is greater than 5 mg/dL but less than 20 mg/dL, and the specific gravity is equal to or greater than 1.002, but less than 1.003. Alternatively, a urine sample is also defined as dilute if the creatinine concentration is equal to or greater than 2 mg/dL, but less than or equal to 5 mg/dL, and the specific gravity is greater than 1.0010 but less than 1.0030. The sample is defined as being substituted if the creatinine concentration is less than 2 mg/L, and the specific gravity is less than or equal to 1.0010, or equal to or greater than 1.0200.

R1 4 x 25mL / R2 4 x 25mL

04 00413 70 13 0100

#### Calibrator

UniCal Adulterated 0mg/L	1 x 25mL	06 00413 70 86 0025
UniCal Creatinine 2mg/L	1 x 25mL	06 00413 70 87 0025
UniCal Creatinine 5mg/L	1 x 25mL	06 00413 70 88 0025
UniCal Creatinine 20mg/L	1 x 25mL	06 00413 70 89 0025
UniCal Creatinine 100mg/L	1 x 25mL	06 00413 70 90 0025
UniCal Creatinine 200mg/L	1 x 25mL	06 00413 70 91 0025
UniCal Creatinine 300mg/L	1 x 25mL	06 00413 70 92 0025
UniCal Creatinine 400mg/L	1 x 25mL	06 00413 70 93 0025
UniCal Creatinine 500mg/L	1 x 25mL	06 00413 70 94 0025

#### Controls

UniLab Adulterated Level 1	1 x 25mL	07 00401 70 86 0025
UniLab Adulterated Level 2	1 x 25mL	07 00401 70 87 0025
UniLab Adulterated Level 3	1 x 25mL	07 00401 70 88 0025
UniLab Adulterated Level 1-3	3 x 25mL	07 00401 70 89 0025

## ADULTERATION KITS

NITRITE ASSAY	KIT SIZE	PRODUCT CODE
The Nitrite Assay Kit detects nitrite added to urine specimens submitted for DAU testing. This assay is for use on automated chemistry analyzers. According to SAMHSA a urine specimen is defined as being adulterated if the concentration of Nitrite is greater than or equal to 500 mg/L when using a colorimetric initial test and a non-colorimetric confirmatory second test. In addition, SAMHSA rules state that a sample is invalid if the concentration of Nitrite is equal to or greater than 200 mg/L when using a colorimetric assay for the initial and confirmatory second test.		
	4 x 25mL	04 00414 70 13 0100
<b>Calibrator</b>		
UniCal Adulterated 0mg/L	1 x 25mL	06 00414 70 86 0025
UniCal Nitrite 125mg/L	1 x 25mL	06 00414 70 87 0025
UniCal Nitrite 250mg/L	1 x 25mL	06 00414 70 88 0025
UniCal Nitrite 500mg/L	1 x 25mL	06 00414 70 89 0025
UniCal Nitrite 1000mg/L	1 x 25mL	06 00414 70 90 0025
UniCal Nitrite 10000mg/L	1 x 25mL	06 00414 70 91 0025
<b>Controls</b>		
UniLab Adulterated Level 1	1 x 25mL	07 00401 70 86 0025
UniLab Adulterated Level 2	1 x 25mL	07 00401 70 87 0025
UniLab Adulterated Level 3	1 x 25mL	07 00401 70 88 0025
UniLab Adulterated Level 1-3	3 x 25mL	07 00401 70 89 0025

OXIDANT ASSAY	KIT SIZE	PRODUCT CODE
The Oxidant Assay Kit detects the presence of oxidants added to urine specimens submitted for DAU testing. This assay is for use on automated chemistry analyzers. This Oxidant reagent contains a reducing compound that yields a colored complex when mixed with an oxidant in urine samples. The color intensity is proportional to the concentration of oxidant present providing quantitative results. Commercial adulterants containing Chromium (VI), Nitrite, Bleach (Sodium Hypochlorite), Iodate, Iodic Acid, and Peroxide yield positive results with Diasystem Oxidant assay at the lowest detection levels in the industry. Let us prove this to you with our Oxidant Validation Kit.		
	R1 4 x 25mL / R2 4 x 25mL	04 00401 70 13 0200
<b>Calibrator</b>		
UniCal Adulterated 0mg/L	1 x 25mL	06 00413 70 86 0025
UniCal Oxidant Low 150mg/L	1 x 25mL	06 00401 70 87 0025
UniCal Oxidant High 200mg/L	1 x 25mL	06 00401 70 88 0025
<b>Controls</b>		
UniLab Adulterated Level 1	1 x 25mL	07 00401 70 86 0025
UniLab Adulterated Level 2	1 x 25mL	07 00401 70 87 0025
UniLab Adulterated Level 3	1 x 25mL	07 00401 70 88 0025
UniLab Adulterated Level 1-3	3 x 25mL	07 00401 70 89 0025

## ADULTERATION KITS

URINE PH ASSAY	KIT SIZE	PRODUCT CODE
The pH Assay Kit determines the pH of urine specimens submitted for DAU testing. This assay is for use on automated chemistry analyzers. According to SAMHSA a urine specimen is defined as being adulterated if the pH is less than 3.0, or equal to or greater than 11.0. SAMHSA defines a urine sample as invalid if it is equal to or greater than 3.0 and less than 4.5, or is equal to or greater than 9.0 and less than 11.0.		
	4 x 25mL	04 00402 70 13 0200
<b>Calibrator</b>		
UniCal Urine pH Level 1 (3,0)	1 x 25mL	06 00402 70 86 0025
UniCal Urine pH Level 1 (4,5)	1 x 25mL	06 00402 70 87 0025
UniCal Urine pH Level 1 (9,0)	1 x 25mL	06 00402 70 88 0025
UniCal Urine pH Level 1 (11,0)	1 x 25mL	06 00402 70 89 0025
<b>Controls</b>		
UniLab Urine pH Level 1	1 x 25mL	07 00402 70 86 0025
UniLab Urine pH Level 2	1 x 25mL	07 00402 70 87 0025
UniLab Urine pH Level 3	1 x 25mL	07 00402 70 88 0025
UniLab Urine pH Level 4	1 x 25mL	07 00402 70 89 0025
UniLab Urine pH Level 5	1 x 25mL	07 00402 70 90 0025

SPECIFIC GRAVITY ASSAY	KIT SIZE	PRODUCT CODE
The Specific Gravity Assay Kit determines the specific gravity of urine specimens submitted for DAU testing. This assay is for use on automated chemistry analyzers. According to SAMHSA a urine specimen is defined as being dilute if the creatinine concentration is greater than 5 mg/dL but less than 20 mg/dL, and the specific gravity is equal to or greater than 1.002, but less than 1.003. Alternatively, a urine sample is also defined as dilute if the creatinine concentration is equal to or greater than 2 mg/dL, but less than or equal to 5 mg/dL, and the specific gravity is greater than 1.0010 but less than 1.0030. The sample is defined as being substituted if the creatinine concentration is less than 2 mg/L, and the specific gravity is less than or equal to 1.0010, or equal to or greater than 1.0200.		
	4 x 25mL	04 00415 70 13 0100
<b>Calibrator</b>		
UniCal Specific Gravity (1,001)	1 x 25mL	06 00413 70 86 0025
UniCal Specific Gravity (1,020)	1 x 25mL	06 00401 70 87 0025
<b>Controls</b>		
UniLab Adulterated Level 1	1 x 25mL	07 00401 70 86 0025
UniLab Adulterated Level 2	1 x 25mL	07 00401 70 87 0025
UniLab Adulterated Level 3	1 x 25mL	07 00401 70 88 0025
UniLab Adulterated Level 1-3	3 x 25mL	07 00401 70 89 0025

**DIASYSTEM SCANDINAVIA AB**

Datorgatan 3, SE-561 33 Huskvarna, Sweden

Tfn: +46 (0) 36 12 62 20

Fax: +46 (0) 36 18 77 30

Email: info@diasystem.se

**ORDER/ADMINISTRATION**

Tfn: +46 (0) 36 12 62 20

Email: order@diasystem.se

**SUPPORT**

Tfn: +46 (0) 36 12 62 20

Email: support@diasystem.se

**WWW.DIASYSTEM.SE**

Follow us on  
**Facebook** and **LinkedIn**



AUTHORIZED DISTRIBUTOR

